

Press Release

Katharina Wulff

ARABESQUES IN ARABESQUES

February 13 – Mai 10, 2026

Solo exhibition of the painter Katharina Wulff
Staatliche Kunsthalle Baden-Baden

Press Conference

Friday, February 13, 2026, 12 noon in the presence of Katharina Wulff

RSVP until Monday, February 9 to
presse@kunsthalle-baden-baden.bwl.de

Contents

- About the exhibition and the artist
- Program
- Press photos
- Press contact
- Informationen on the Staatliche Kunsthalle Baden-Baden

About the exhibition

The Staatliche Kunsthalle Baden-Baden is pleased to present *Arabesken in Arabesken* (Arabesques in Arabesques), the most comprehensive exhibition of work by the painter Katharina Wulff (b. 1968, Berlin) to date.

The show includes paintings, drawings, and architecture from more than three decades of artistic activity. Based on observation in the broadest sense, Wulff's meticulously composed tableaux of everyday scenes are realistic in the tradition of realism. They reflect her interest in landscapes, architecture, and people—their social position, clothing and attributes, physical bearing, and movements.

Featuring forty works from collections around the globe, the exhibition provides an overview of the artist's oeuvre, which was shaped by the experience and memories of growing up in East Berlin, the Berlin art world in the 1990s, and the impact of the different cultures in which the artist has moved for many years.

All these impulses are addressed individually or in a rich pastiche of past and present in which a figure is frequently placed on the edge or in the center of a narrative or portrait—sometimes as an observer, and other times as the focus of the image. Wulff's repeated inclusion and layering of such encounters, archival material, and memories imbues her work with a timeless quality, providing access that is tangible yet always remains disconnected from the reality of the viewer.

The images arise from the construction of relationships – in dimensions, in proximity and lines of sight, between landscape and city, people and architecture; and likewise in social contexts, often in the relationship between people and the world around them.

Since the early 1990s, Wulff has used these perspectives to develop a body of work that is shaped by its special sensitivity to the potentials of figurative painting as well as by its awareness of social dynamics and cultural influence.

The exhibition title *Arabesken in Arabesken* (Arabesques in Arabesques) refers to the arabesque as a nonfigurative ornament that consists of intertwined flowers. In Arab architecture, the arabesque serves to fill rectangular surfaces on pilasters and friezes. Based on architecture from her pictures, Wulff designed two new benches for the Kunsthalle for this exhibition. The opulence and fragrance of cedarwood stands in striking contrast to the Neoclassical style of



the Kunsthalle Baden-Baden and its characteristic sequence of rooms as a gallery for paintings.

The exhibition is curated by Christina Lehnert.

About Katharina Wulff

The painter Katharina Wulff (born 1968 in Berlin) studied painting at the Berlin University of the Arts from 1990 to 1996.

Katharina Wulff's work has been presented in national and international institutions since the early 1990s. Since the winter semester of 2020/2021, Katharina Wulff has held a professorship in painting at the Düsseldorf Art Academy.

Selected solo exhibitions include: Bonner Kunstverein / Kunstverein Göttingen, DE (1999); San Francisco Museum of Modern Art, San Francisco, CA, US (2012); Haus Mödrath, Kerpen, DE (2019); Brighton CCA, Brighton, UK (2020).

Katharina Wulff lives and works in Marrakech.

Program

Opening, opening weekend and accompaniment program

Friday, February 13

7 p.m. Opening in the presence of Katharina Wulff and the curator of the exhibition Christina Lehnert

Sunday, February 15

2 p.m. Curator's tour with Christina Lehnert.

Friday, February 20

1 p.m. *Friday Lunch-Tour* – Short guided tour. Fridays 1 to 1:30 a.m.

Thursday, March 5

6:30-8:30 p.m. *Kleiner Freitag (Little Friday)*. Curator's tour with Christina Lehnert, followed by an aperitif in a relaxed atmosphere.

Tuesday, February 24, 11 a.m.

Tuesday, March 31, 4 a.m.

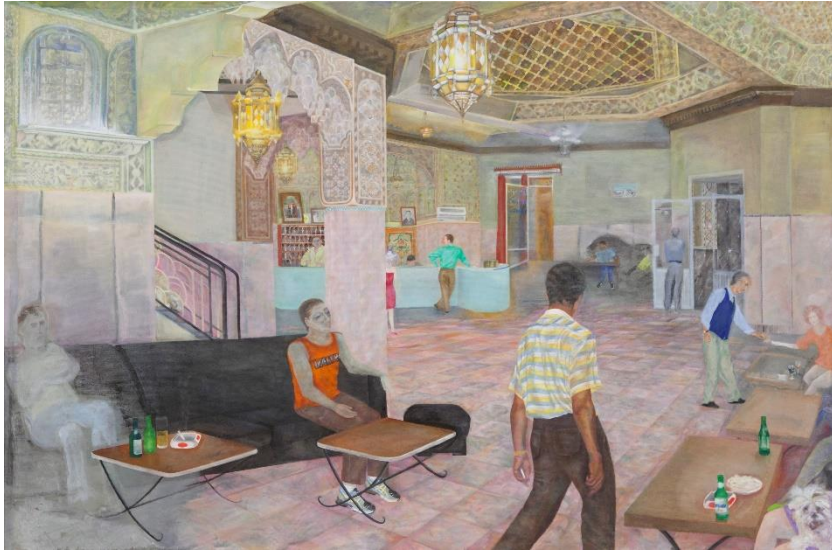
Tuesday, April 21, 11 a.m.

Bring your Baby-Tour – Relaxed short tour for parents accompanied by their baby.

Public guided tours every Sunday at 2 p.m.

Please visit our website for the latest information and feel free to subscribe to our newsletter.

Press photos



Katharina Wulff, *Grand Hotel Tazi*, 2016, oil on canvas, 157,2 x 237,5 cm. Courtesy the Artist and Galerie Neu, Berlin



Katharina Wulff, *The Woolgatherer*, 2005, oil on canvas, 120 x 160 cm. Courtesy the Artist and collection Alexander Schröder



Katharina Wulff, *The Departure*, 2012, oil on canvas, 65 × 52 cm, Courtesy the Artist and Greene Naftali, New York



Katharina Wulff, *Frieda*, 2023, oil on canvas, 44 x 38,4 cm. Courtesy the Artist and Galerie Neu, Berlin

Press contact

Shirley M. Schalla-Calderón

T: +49 7221 300 76 410

presse@kunsthalle-baden-baden.bwl.de

shirleymarcela.schalla-calderon@kunsthalle-baden-baden.bwl.de

Opening hours

Tuesday – Sunday, 10 a.m. to 6 p.m.

Open on all public holidays except December 24 and 31.

Prices

Adults 7€, reduced 5€

Fridays free admission.

Staatliche Kunsthalle Baden-Baden

Lichtentaler Allee 8a

76530 Baden-Baden

www.kunsthalle-baden-baden.de

The Staatliche Kunsthalle Baden-Baden is an institution of the state of Baden-Württemberg under the auspices of the Ministry of Science, Research and the Arts of Baden-Württemberg, Research and Art Baden-Württemberg.



**Baden-Württemberg
Ministerium für Wissenschaft,
Forschung und Kunst**